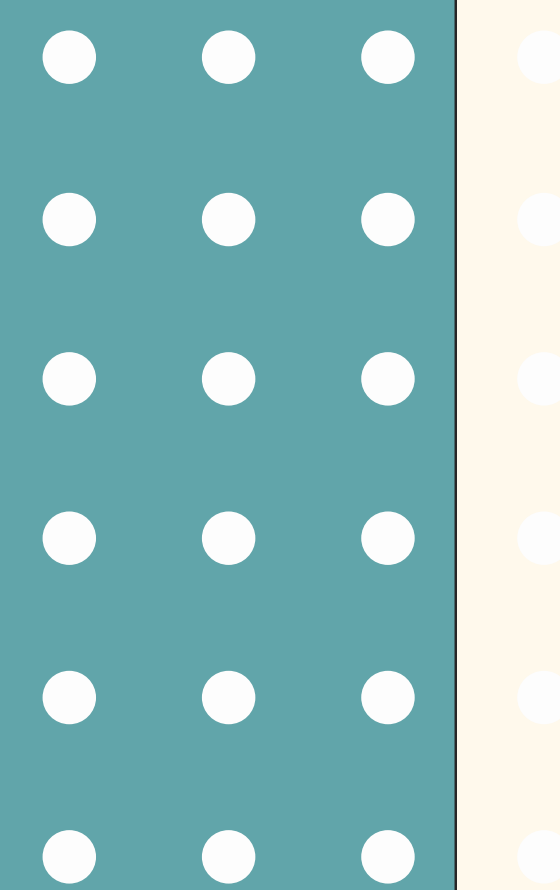


2025 THE EMI ACADEMIC LITERACY TALENT AND LEADERSHIP COURSE - AUTUMN PROGRAM



Course Information

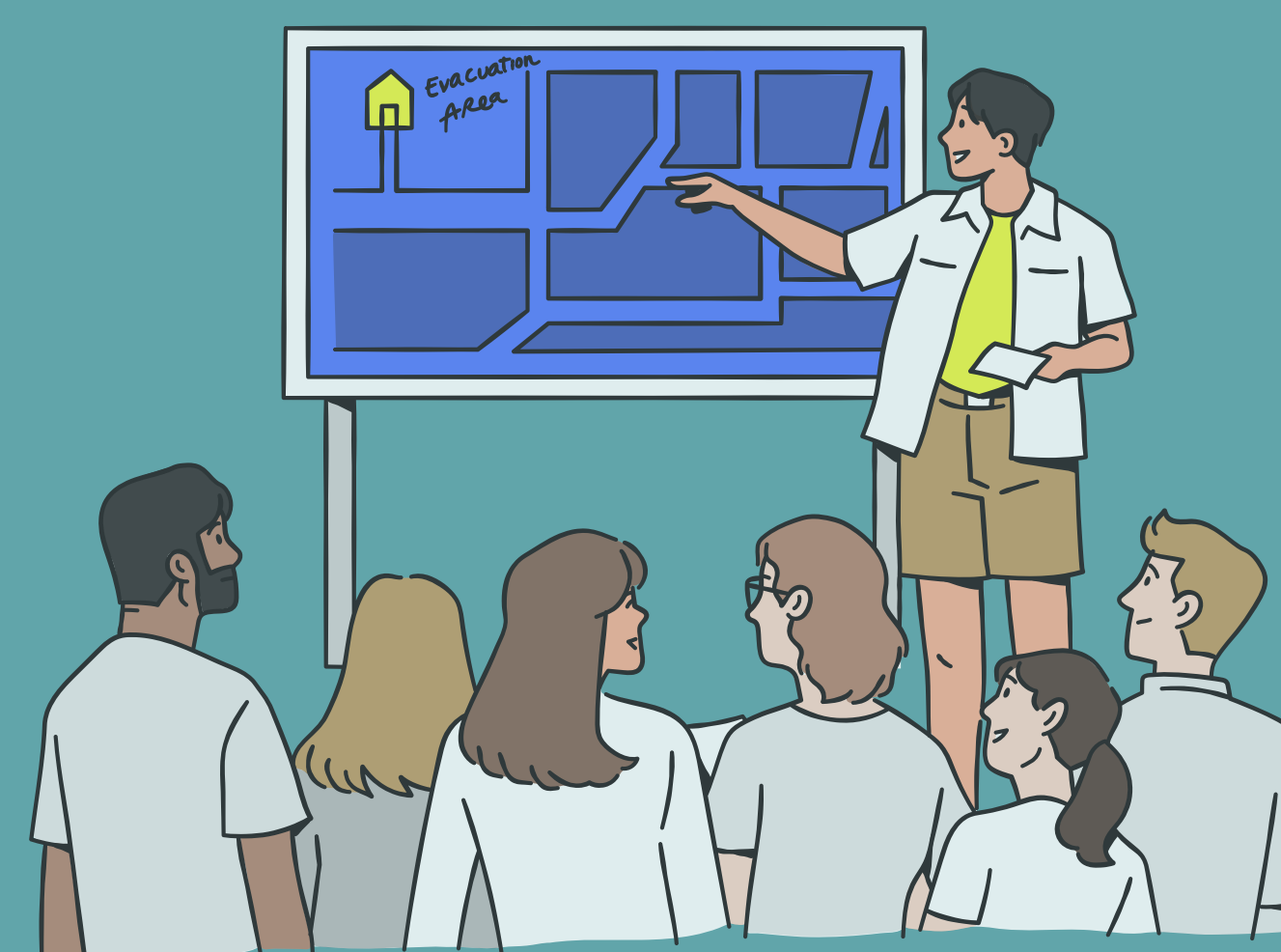
- Course Period: September 15 (Mon.) – November 21 (Fri.), 2025.
- Learning Platforms: Moodle and Sensay.
- Requirements: Complete 2 hours of coursework for each of the four modules (total of 8 hours) and participate in the Final Presentation to meet the completion criteria.

Eligibility

- Students currently enrolled in college or graduate programs, or individuals interested in working as an EMI TAs/Tutors at Center for Academic Literacy, NTNU.
- Recommended English proficiency: B2 level or above.

Enrollment Period

- August 18 (Mon.) – September 7 (Sun.), 2025.



If the announcement date is technically delayed, the deadline will be extended accordingly. For any inquiries, please feel free to contact us by phone or email.



Application Form

**For more information,
please visit our website.**



國立臺灣師範大學
EMI教學資源中心
NTNU RESOURCE CENTER FOR EMI